



# REPAIR PARTS

## GMEC 80% High Efficient Gas Furnace

GMEC800403ANAB  
GMEC800403AXAB  
GMEC800603ANAB  
GMEC800603AXAB  
GMEC800603BNAB  
GMEC800603BXAB  
GMEC800803BNAB  
GMEC800803BXAB  
GMEC800804BNAB  
GMEC800804BXAB  
GMEC800804CNAB  
GMEC800804CXAB  
GMEC800805CNAB  
GMEC800805CXAB  
GMEC800805DXAB  
GMEC801004CNAB  
GMEC801005CNAB  
GMEC801005CXAB  
GMEC801205DNAB



This manual is to be used by qualified technicians only.

© 2020 Goodman Manufacturing Company, L.P. ♦ 5151 San Felipe St, Suite 500 ♦ Houston, TX 77056

# Important Information

---

## Index

Functional Parts List .....	3
Illustration and Parts .....	4 - 9

*Views shown are for parts illustrations only, not servicing procedures*

### Text Codes:

AR - As Required

NA - Not Available

NS - Not Shown

00000000 - See Note

QTY - Quantity Example (QTY 3) (If Quantity not shown, Quantity = 1)

M - Model Example (M1) (If M Code not shown, then part is used on all Models)

### Expanded Model Nomenclature:

Example M1 - Model#1 M2 - Model#2 M3 - Model#3
---

Goodman Manufacturing Company, L.P. is not responsible for personal injury or property damage resulting from improper service. Review all service information before beginning repairs.

Warranty service must be performed by an authorized technician, using authorized factory parts. If service is required after the warranty expires, Goodman Manufacturing Company, L.P. also recommends contacting an authorized technician and using authorized factory parts.

Goodman Manufacturing Company, L.P. reserves the right to discontinue, or change at any time, specifications or designs without notice or without incurring obligations.

For assistance within the U.S.A. contact:  
Homeowner Support  
Goodman Manufacturing Company, L.P.  
19001 Kermier Road  
Waller, Texas 77484  
877-254-4729-Telephone  
713-863-2382-Facsimile

For assistance outside the U.S.A. contact:  
International Division  
Goodman Manufacturing Company, L.P.  
19001 Kermier Road  
Waller, Texas 77484  
713-861-2500-Telephone  
713-863-2382-Facsimile

# Functional Parts

**Part No:**            **Description:**

20162904	*PRIMARY LIMIT-TEMPERATURE CONTROL (M7, M8, M9, M10) *Refer to service bulletin SF-054
0130F00791	AIR PRESSURE SWITCH (M1, M2, M3, M4, M9, M10, M16, M17, M18, M19)
0130F00792	AIR PRESSURE SWITCH (M7, M8, M13, M14)
0130F00795	AIR PRESSURE SWITCH (M5, M6, M15)
0130F00794	AIR PRESSURE SWITCH (M11, M12)
0130F00038	AUX LIMIT - LT BLUE 120 <sup>o</sup>
0130F00010	FLAME SENSOR
0151M00027	GAS VALVE
10690402	INTERLOCK SWITCH
20162903	LIMIT (M3, M4, M5, M6)
0130F00105	LIMIT SWITCH (M11, M12, M13, M14)
0130M00063	LIMIT, PRIMARY, 140, GOLD (M15, M16, M19)
20162906	LIMIT-WHITE (M1, M2)
20162905	LIMIT-YELLOW (M17, M18)
10123529	MANUAL RESET R.O.S. LIMIT (QTY 2)
0131F00151	MOTOR PROGRAMMED (M13, M14)
0131F00152	MOTOR PROGRAMMED (M19)
0131F00153	MOTOR PROGRAMMED (M16)
0131F00154	MOTOR PROGRAMMED (M17, M18)
0131F00159	MOTOR PROGRAMMED (M15)
0131F00160	MOTOR PROGRAMMED (M5, M6)
0131F00161	MOTOR PROGRAMMED (M9, M10)
0131F00162	MOTOR PROGRAMMED (M7, M8)
0131F00163	MOTOR PROGRAMMED (M1, M2)
0131F00164	MOTOR PROGRAMMED (M11, M12)
0131F00150	MOTOR PROGRAMMED (M3, M4)
0131M00781P	MOTOR, VENT 2-STAGE
PCBBF139	PCB IGNITION CONTROL
0130F00008	SINI IGNITOR
0130M00140	TRANSFORMER,(120V TO 24V,40VA,
DY6.186.070	VENT MOTOR CAPACITOR
0150M00042	WHEEL, BLOWER (10 X 10) (M11, M12, M13, M14, M16, M17, M18)
0150M00043	WHEEL, BLOWER (10 X 8) (M5, M6, M7, M8, M9, M10)
0150M00062	WHEEL,BLOWER (M15, M19)
0150M00061	WHEEL,BLOWER (M1, M2, M3, M4)

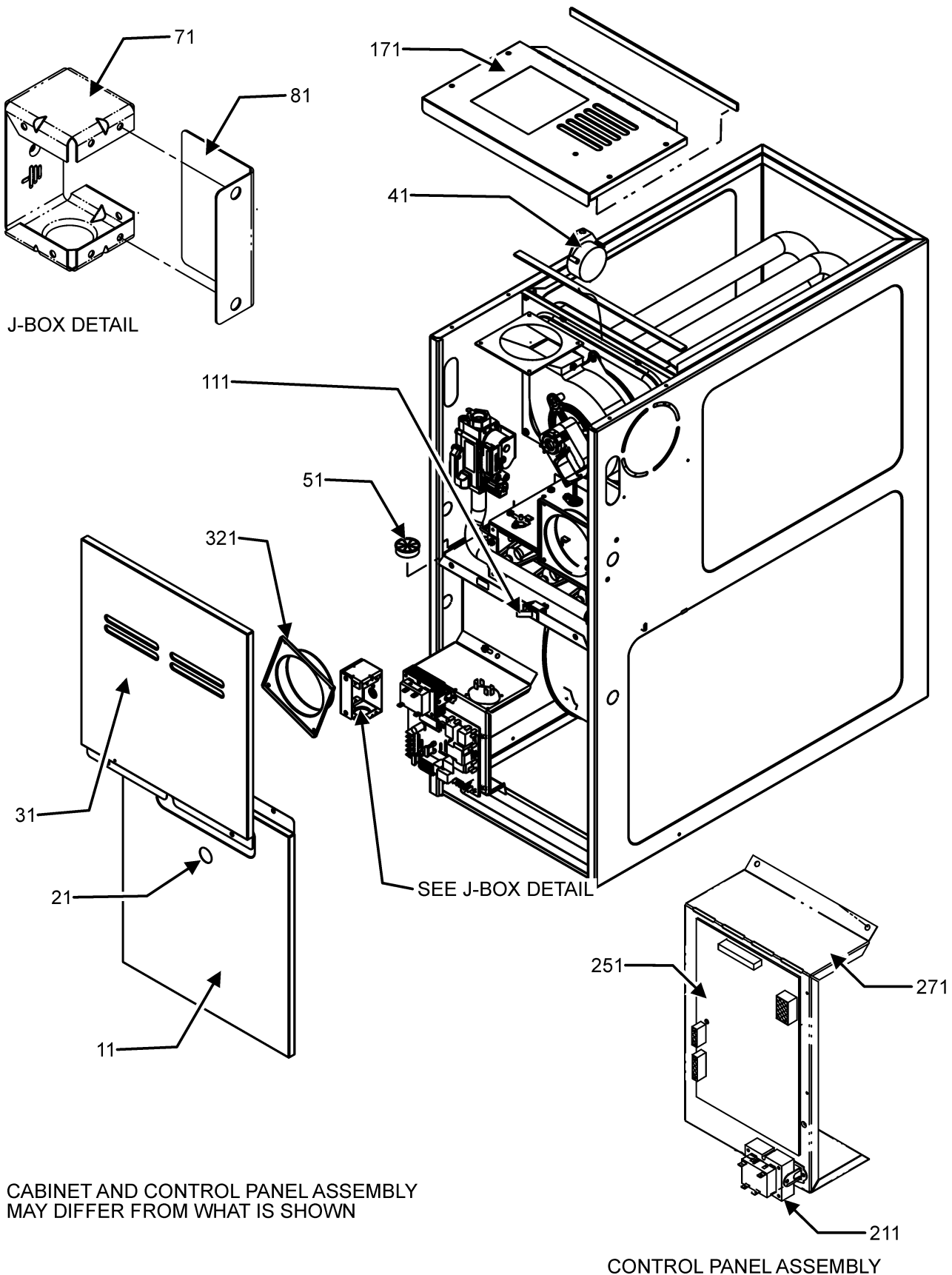
## Expanded Model Nomenclature

M1 - GMEC800403ANAB
M2 - GMEC800403AXAB
M3 - GMEC800603ANAB
M4 - GMEC800603AXAB
M5 - GMEC800603BNAB
M6 - GMEC800603BXAB
M7 - GMEC800803BNAB
M8 - GMEC800803BXAB
M9 - GMEC800804BNAB
M10 - GMEC800804BXAB
M11 - GMEC800804CNAB
M12 - GMEC800804CXAB
M13 - GMEC800805CNAB
M14 - GMEC800805CXAB
M15 - GMEC800805DXAB
M16 - GMEC801004CNAB
M17 - GMEC801005CNAB
M18 - GMEC801005CXAB
M19 - GMEC801205DNAB

### SPECIAL PARTS

0161F00007	NAMEPLATE, GOODMAN
------------	--------------------

# Cabinet Assembly



CABINET AND CONTROL PANEL ASSEMBLY  
MAY DIFFER FROM WHAT IS SHOWN

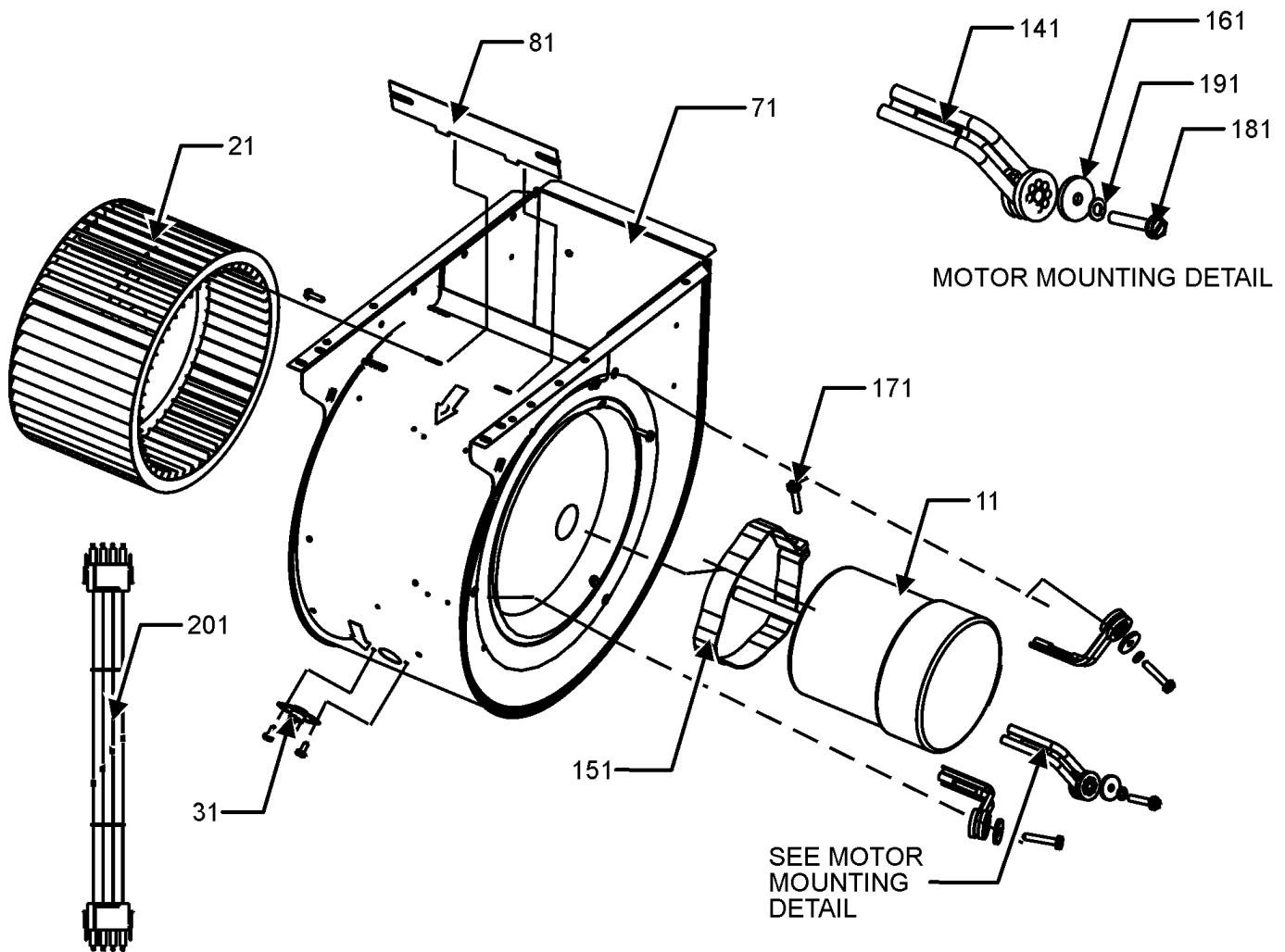
CONTROL PANEL ASSEMBLY

# Cabinet Assembly

Ref. Part No:	Description:	Ref. Part No:	Description:
<b>Image 1:</b>		<b>Expanded Model Nomenclature</b>	
11	0121F00122DG DOOR, BLOWER, 14"-PAINTED (M1, M2, M3, M4)	M1	- GMEC800403ANAB
11	0121F00123DG DOOR, BLOWER, 17.5"-PAINTED (M5, M6, M7, M8, M9, M10)	M2	- GMEC800403AXAB
11	0121F00124DG DOOR, BLOWER, 21"-PAINTED (M11, M12, M13, M14, M16, M17, M18)	M3	- GMEC800603ANAB
11	0121F00125DG DOOR, BLOWER, 24.5"-PAINTED (M15, M19)	M4	- GMEC800603AXAB
21	B1392139 VIEW PORT BUSHING-BLOWER DOOR	M5	- GMEC800603BNAB
31	0121F00118DG DOOR CTRL ACCESS, 14"-PAINTED (M1, M2, M3, M4)	M6	- GMEC800603BXAB
31	0121F00120DG DOOR CTRL ACCESS, 21"-PAINTED (M11, M12, M13, M14, M16, M17, M18)	M7	- GMEC800803BNAB
31	0121F00119DG DOOR CTRL ACCESS, 17.5"-PAINTED (M5, M6, M7, M8, M9, M10)	M8	- GMEC800803BXAB
31	0121F00121DG DOOR CTRL ACCESS, 24.5"-PAINTED (M15, M19)	M9	- GMEC800804BNAB
41	0130F00791 AIR PRESSURE SWITCH (M1, M2, M3, M4, M9, M10, M16, M17, M18, M19)	M10	- GMEC800804BXAB
41	0130F00792 AIR PRESSURE SWITCH (M7, M8, M13, M14)	M11	- GMEC800804CNAB
41	0130F00794 AIR PRESSURE SWITCH (M11, M12)	M12	- GMEC800804CXAB
41	0130F00795 AIR PRESSURE SWITCH (M5, M6, M15)	M13	- GMEC800805CNAB
51	B1392147 UNIVERSAL BUSHING WITH SLICE	M14	- GMEC800805CXAB
71	4014502 J-BOX	M15	- GMEC800805DXAB
81	4015502 COVER, J-BOX	M16	- GMEC801004CNAB
111	10690402 INTERLOCK SWITCH	M17	- GMEC801005CNAB
171	0121F00141DG TOP, FURNACE 14"-PAINTED (M1, M2, M3, M4)	M18	- GMEC801005CXAB
171	0121F00142DG TOP, FURNACE 17.5"-PAINTED (M5, M6, M7, M8, M9, M10)	M19	- GMEC801205DNAB
171	0121F00143DG TOP, FURNACE 21"-PAINTED (M11, M12, M13, M14, M16, M17, M18)		
171	0121F00463DG TOP, FURNACE 24.5" PAINTED (M15, M19)		
211	0130M00140 TRANSFORMER ,(120V TO 24V,40VA,		
251	PCBBF139 PCB IGNITION CONTROL		
271	0121F00464 MOUNTING PLATE-CONTROLS		
321	4023500 CHIMNEY TRANSITION TOP		
NS	0161F00007 NAMEPLATE, GOODMAN		

# Blower Assembly

## BLOWER ASSEMBLY



# Blower Assembly

Ref. Part No:	Description:	Ref. Part No:	Description:
<b>Image 1:</b>		<b>Expanded Model Nomenclature</b>	
11	0131F00150 MOTOR PROGRAMMED (M3, M4)	M1	- GMEC800403ANAB
11	0131F00151 MOTOR PROGRAMMED (M13, M14)	M2	- GMEC800403AXAB
11	0131F00152 MOTOR PROGRAMMED (M19)	M3	- GMEC800603ANAB
11	0131F00153 MOTOR PROGRAMMED (M16)	M4	- GMEC800603AXAB
11	0131F00154 MOTOR PROGRAMMED (M17, M18)	M5	- GMEC800603BNAB
11	0131F00159 MOTOR PROGRAMMED (M15)	M6	- GMEC800603BXAB
11	0131F00160 MOTOR PROGRAMMED (M5, M6)	M7	- GMEC800803BNAB
11	0131F00161 MOTOR PROGRAMMED (M9, M10)	M8	- GMEC800803BXAB
11	0131F00162 MOTOR PROGRAMMED (M7, M8)	M9	- GMEC800804BNAB
11	0131F00163 MOTOR PROGRAMMED (M1, M2)	M10	- GMEC800804BXAB
11	0131F00164 MOTOR PROGRAMMED (M11, M12)	M11	- GMEC800804CNAB
21	0150M00042 WHEEL, BLOWER (10 X 10) (M11, M12, M13, M14, M16, M17, M18)	M12	- GMEC800804CXAB
21	0150M00043 WHEEL, BLOWER (10 X 8) (M5, M6, M7, M8, M9, M10)	M13	- GMEC800805CNAB
21	0150M00061 WHEEL, BLOWER (M1, M2, M3, M4)	M14	- GMEC800805CXAB
21	0150M00062 WHEEL, BLOWER (M15, M19)	M15	- GMEC800805DXAB
31	0130F00038 AUX LIMIT - LT BLUE 120°	M16	- GMEC801004CNAB
71	2539307 BLOWER HOUSING 10 X 10 (M11, M12, M13, M14, M15, M16, M17, M18, M19)	M17	- GMEC801005CNAB
71	2539305 BLOWER HOUSING 10 X 6 (M1, M2, M3, M4)	M18	- GMEC801005CXAB
71	2539306 BLOWER HOUSING 10 X 8 (M5, M6, M7, M8, M9, M10)	M19	- GMEC801205DNAB
81	764741 BLOWER BLOCK-OFF 10 X 10 (M11, M12, M13, M14, M15, M16, M17, M18, M19)		
81	764740 BLOWER BLOCK-OFF 10 X 8 (M5, M6, M7, M8, M9, M10)		
81	764739 BLOWER CUT-OFF 10 X 6 (M1, M2, M3, M4)		
141	B1376863 MOUNT ARM, MOTOR (HEAVY DUTY) (QTY 3)		
151	0121M00039 MOUNT BAND, MOTOR (HEAVY DUTY)		
161	B1392918 WASHER FLAT 1/4 ID X 1OD (QTY 3)		
171	0163M00320 HEX HEAD ALL THREAD TAP BOLT		
181	M0250565 SCREW-TC 1.25" (QTY 3)		
191	B1393800 LOCKNUT NYLON INSERT 1/4,20		
201	0159F00076 WIRING HARNESS		



# Heat Exchange Assembly

Ref. Part No:	Ref. Part No:	Description:	Description:
<b>Image 1:</b>		<b>Image 1:</b>	
11	0270F00900	HEAT EXCHANGER ASSY (M1, M2)	321 0121F00333 21" COLLECTOR BOX 1.75" DIA (M16, M17, M18)
11	0270F00901	HEAT EXCHANGER ASSY (M3, M4)	321 0121F00336 21" FLUE COLLECTOR BOX 1.50" (M13, M14)
11	0270F00902	HEAT EXCHANGER ASSY (M7, M8, M9, M10)	321 0121F00330 24.5" COLLECTOR BOX 2.125" DIA (M19)
11	0270F00903	HEAT EXCHANGER ASSY (M16, M17, M18)	321 0121F00655 COLLECTOR BOX 17.5" 1.437 DIA (M7, M8, M9, M10)
11	0270F00904	HEAT EXCHANGER ASSY (M19)	321 0121F00659 COLLECTOR BOX 21" 1.40 DIA (M11, M12)
11	0270F00929	HEAT EXCHANGER ASSY (M5, M6)	321 0121F00198 COLLECTOR BOX, 14" 1.75 DIA (M3, M4)
11	0270F00930	HEAT EXCHANGER ASSY (M11, M12, M13, M14)	331 0128F00006 CHIMNEY TRANSITION BOTTOM
11	0270F02961	HEAT EXCHANGER ASSY (M15)	341 0131M00781P MOTOR, VENT 2-STAGE
51	0151M00027	GAS VALVE	351 0154F00003 GASKET-14 INCH (M1, M2, M3, M4)
61	0120F00006	MANIFOLD (M1, M2)	351 0154F00004 GASKET-17.5 INCH (M5, M6, M7, M8, M9, M10)
61	0120F00007	MANIFOLD (M3, M4, M5, M6)	351 0154F00005 GASKET-21 INCH (M11, M12, M13, M14, M15, M16, M17, M18)
61	0120F00008	MANIFOLD (M7, M8, M9, M10, M11, M12, M13, M14, M15)	351 0154F00006 GASKET-24.5 INCH (M19)
61	0120F00009	MANIFOLD (M16, M17, M18)	NS 0259F00062 INDUCER HARNESS ASSY
61	0120F00010	MANIFOLD (M19)	NS 0259F00281 WIRE HARNESS ASSY
151	20162904	*PRIMARY LIMIT-TEMPERATURE CONTROL (M7, M8, M9, M10) *Refer to service bulletin SF-054	NS 0259F00293 WIRE HARNESS ASSY
151	20162903	LIMIT (M3, M4, M5, M6)	<b>Expanded Model Nomenclature</b> M1 - GMEC800403ANAB M2 - GMEC800403AXAB M3 - GMEC800603ANAB M4 - GMEC800603AXAB M5 - GMEC800603BNAB M6 - GMEC800603BXAB M7 - GMEC800803BNAB M8 - GMEC800803BXAB M9 - GMEC800804BNAB M10 - GMEC800804BXAB M11 - GMEC800804CNAB M12 - GMEC800804CXAB M13 - GMEC800805CNAB M14 - GMEC800805CXAB M15 - GMEC800805DXAB M16 - GMEC801004CNAB M17 - GMEC801005CNAB M18 - GMEC801005CXAB M19 - GMEC801205DNAB
151	0130F00105	LIMIT SWITCH (M11, M12, M13, M14)	
151	0130M00063	LIMIT, PRIMARY, 140, GOLD (M15, M16, M19)	
151	20162906	LIMIT-WHITE (M1, M2)	
151	20162905	LIMIT-YELLOW (M17, M18)	
161	4028000	ORIFICE PLATE, 2CELL (M1, M2)	
161	4028001	ORIFICE PLATE, 3CELL (M3, M4, M5, M6)	
161	4028002	ORIFICE PLATE, 4 CELL (M7, M8, M9, M10, M11, M12, M13, M14, M15)	
161	4028003	ORIFICE PLATE, 5CELL (M16, M17, M18)	
161	4028004	ORIFICE PLATE, 6CELL (M19)	
201	0121F00162	TOP, BURNER BOX 2 CELL (M1, M2)	
201	0121F00163	TOP, BURNER BOX 3 CELL (M3, M4, M5, M6)	
201	0121F00164	TOP, BURNER BOX 4 CELL (M7, M8, M9, M10, M11, M12, M13, M14, M15)	
201	0121F00165	TOP, BURNER BOX 5 CELL (M16, M17, M18)	
201	0121F00166	TOP, BURNER BOX 6 CELL (M19)	
211	10123529	MANUAL RESET R.O.S. LIMIT (QTY 2)	
221	0121F00146	SIDE PLATE BURNER BOX (QTY 2)	
231	0130F00008	SINI IGNITOR	
241	0130F00010	FLAME SENSOR	
271	10716005	ORIFICE (QTY 2)	
281	B4022700	INSHOT BURNER ASSY 3" (QTY 2)	
291	0121F00167	BURNER RACK, 2 CELL (M1, M2)	
291	0121F00168	BURNER RACK, 3 CELL (M3, M4, M5, M6)	
291	0121F00169	BURNER RACK, 4 CELL (M7, M8, M9, M10, M11, M12, M13, M14, M15)	
291	0121F00170	BURNER RACK, 5 CELL (M16, M17, M18)	
291	0121F00171	BURNER RACK, 6 CELL (M19)	
301	DY6.186.070	VENT MOTOR CAPACITOR	
311	0154F00003	GASKET-14 INCH (M1, M2, M3, M4)	
311	0154F00004	GASKET-17.5 INCH (M5, M6, M7, M8, M9, M10)	
311	0154F00005	GASKET-21 INCH (M11, M12, M13, M14, M15, M16, M17, M18)	
311	0154F00006	GASKET-24.5 INCH (M19)	
321	0121F00327	14" COLLECTOR BOX 1.125" DIA (M1, M2)	
321	0121F00328	17.5" COLLECTOR BOX 1.250" DIA (M5, M6)	
321	0121F00334	21" COLLECTOR BOX 1.625" DIA (M15)	